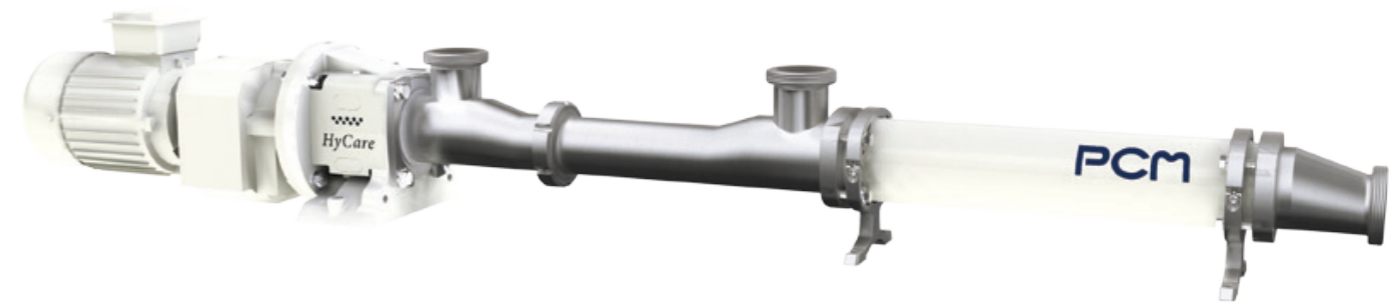




HYCARE™

The most hygienic progressing cavity pump on the market



The HyCare™ pump has been designed to meet the strictest food hygiene standards.

The HyCare™ pump complies with the **FDA** (USA) and **CE 1935/2004** (Europe) requirements which guarantee materials compatibility with food products and equipment traceability.

EHEDG (Europe) and **3A** (USA) certified, this pump has become the **reference for the food industry**.

HyCare™ pump technology offers **unbeatable hygiene and food safety**.



TECHNICAL PERFORMANCES

- Pressure : 16 bars
- Flowrate : 50 m³/h
- Particles size : 32 mm

RANGE

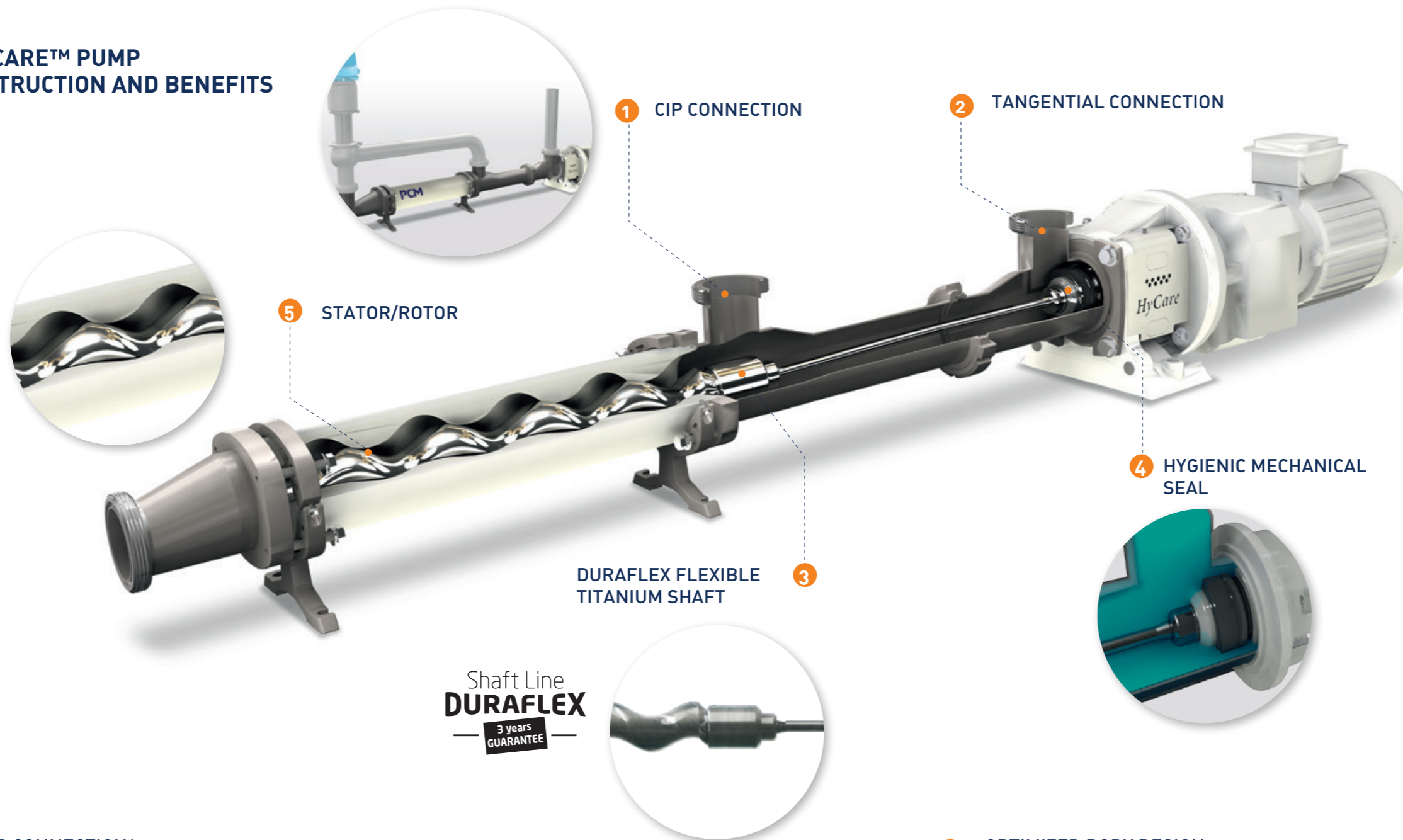
- 22 models

EXAMPLES OF APPLICATIONS

Designed for microbologically sensitive food applications:

- Dairy products
- Meat
- Eggs ...

HYCARE™ PUMP CONSTRUCTION AND BENEFITS



Shaft Line
DURAFLEX
3 years
GUARANTEE

1 CIP CONNECTION*

- Designed to be cleaned in place

2 DURAFLEX FLEXIBLE SHAFT

In titanium:

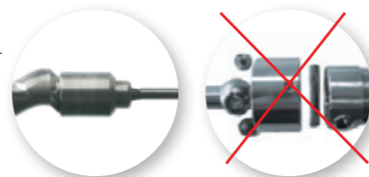
- Quality and reliability
- 3 years guarantee
- The shaft flexibility allows a small footprint

One-piece design :

- Any possible retention area unlike the classic open joints



- The total absence of wear parts prevents any risk of metal particles being released into the product



DURAFLEX FLEXIBLE
TITANIUM SHAFT

2 TANGENTIAL CONNECTION

4 HYGIENIC MECHANICAL SEAL

3 OPTIMIZED BODY DESIGN

- The shape and the tangential connection improve cleaning efficiency (internal flow speed)

4 HYGIENIC MECHANICAL SEAL

- Its position near the CIP inlet allows optimum cleaning
- Its internal design is free of screws or springs (any retention area)
- Easy and quick maintenance without disconnecting the pipes

5 MOINEAU™ TECHNOLOGY respects the texture of your pumped products *(learn more p.19)*

6 STATOR ANTI-ROTATION SYSTEM

- Ensures a secured position even in case of high pressure or high temperature

7 BASEFRAME WITH ADJUSTABLE FEET

AVAILABLE CONNECTIONS

- SMS
- Clamp (3-A)
- DIN 11851
- Din 11864-1 (3A and EHEDG)

The pump can be provided **with or without** vertical tangential CIP connection.

3 AVAILABLE POSITIONING FOR SUCTION CONNECTIONS

- Upward tangential
- Right tangential
- Left tangential



Upward tangential
Single flow: more efficient

Upward
Divided flow: less effective

